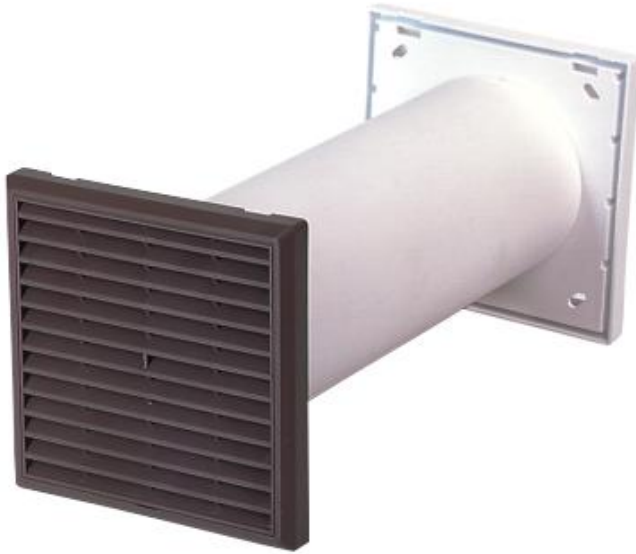
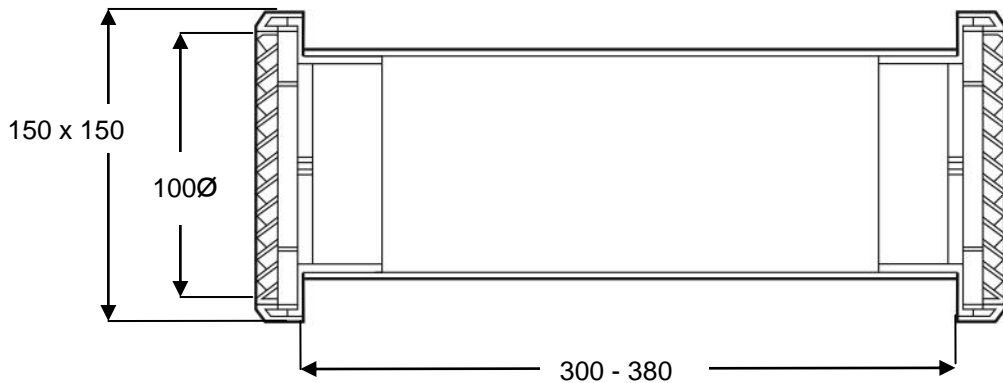


CIRCULAR THROUGH WALL VENTILATOR

REF: GAS8



GAS8



General

GAS8 Supplies low levels of combustion/cooling air for heating appliances. Incorporates concealed fixings and larger flange to reduce making good.

Details

REF	GAS8	MANUFACTURING PROCESS	Injection Moulded & Extruded
SIZE	4" Diameter x 300-380mm long	MATERIAL	Plastic (High Impact Polystyrene & PVC)
FREE AREA	50cm ²		
kW AREA	17kW	COLOUR	Internal vent White External Vent Brown or Terracotta,
PACKING	Individually Boxed		
WEIGHT	720 grams		

References BS5440 Pt.2:2000

Version 1.0	28/08/2007	DRN BCW	DRG No. AF-GAS8-005
-------------	------------	---------	---------------------

Airflow(Nicol Ventilators) Limited, 15 Queensway, Stem Lane Industrial Estate, New Milton, Hampshire, BH25 5NN
Telephone: 01425 611547 FAX:01425 638912 e-mail:sales@airflow-vent.co.uk
Made in the UK

Due to continuous development Airflow (Nicol Ventilators) Limited reserves the right to amend the specification without notice.